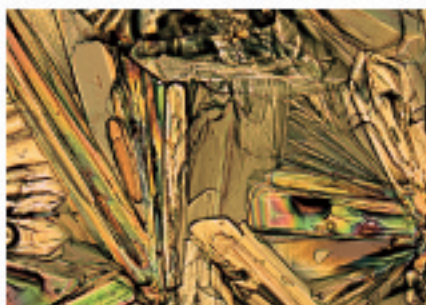


What Did You See?

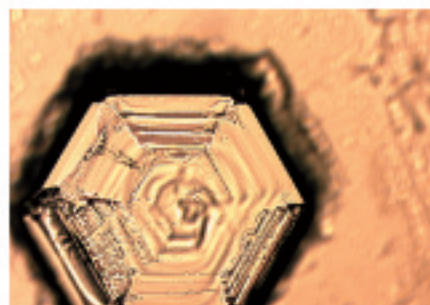
Salt **crystals** formed on the slide when the water evaporated. Crystals are solids made from different types of salts. The tiny **particles** that make up the salts form a pattern. The patterns are repeated until billions of salt particles make larger crystals that have the same shape. Each type of salt has its own signature crystal shape. Table salt forms clear, colorless, cube-shaped crystals. The sugar sample is slower to form crystals. Epsom salts form hexagonal (6-sided) crystals. The different fruit samples are made up of several chemicals, so they have a mixture of crystal shapes and sizes.



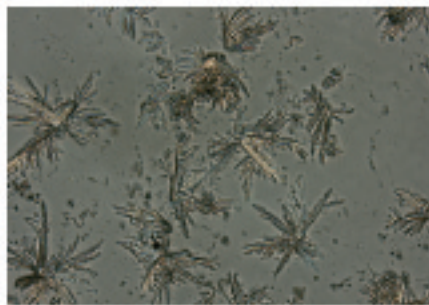
Alum crystals x50.



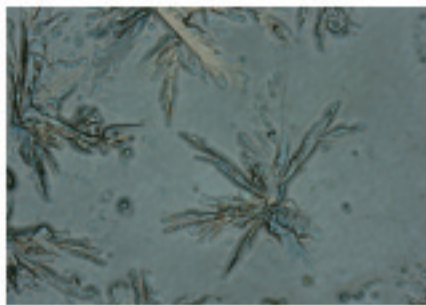
Alum crystals x100.



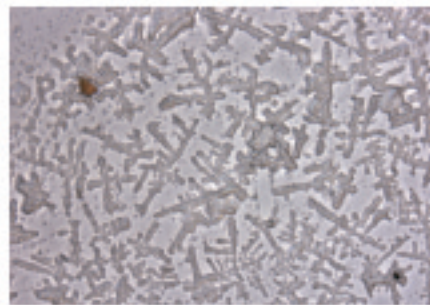
Epsom crystals x10.



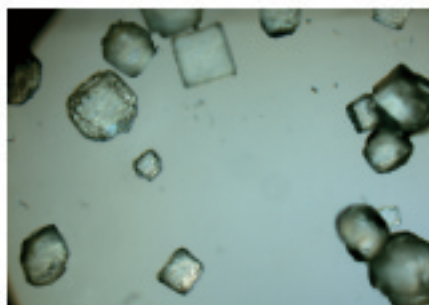
Rhubarb crystals x200.



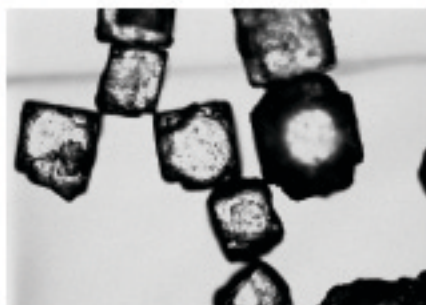
Rhubarb crystals x400.



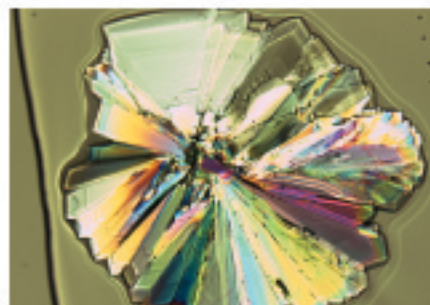
Tear crystals x200.



Salt crystals x50.



Salt crystals x100.



Sugar crystals x100.